

Schedule

Contract Period: June 29, 2023 to June 28, 2028

Contract Number: 47Q SMA23D08Q6

SIN: 33721



FRÍANT

Seating Pricebook

TABLE OF CONTENTS

INTRODUCTION

| | |
|----------------------|---|
| Terms and Conditions | 3 |
| Detailed Dimensions | 5 |

TASK

| | |
|----------|----|
| Vektor | 8 |
| Ignite | 8 |
| Tango | 8 |
| Zone | 9 |
| Zone Too | 9 |
| Yele | 10 |
| Tommen | 10 |

CONFERENCE/EXECUTIVE

| | |
|---------|----|
| Prov | 11 |
| Madison | 11 |

STACKING

| | |
|----------------|----|
| Prep | 12 |
| Prep Bar Stool | 12 |

SOFT SEATING

ANZA COLLECTION

| | |
|------------|----|
| Anza Chair | 13 |
|------------|----|

HANNO COLLECTION

| | |
|--------------------|----|
| Hanno Sofa | 14 |
| Hanno Loveseat | 14 |
| Hanno Lounge Chair | 14 |

JEST COLLECTION

| | |
|--------------------|----|
| Jest Lounge Chair | 15 |
| Jest Guest Chair | 15 |
| Jest Table Chair | 15 |
| Jest Y Base Chair | 16 |
| Jest Bar Stool | 16 |
| Jest Counter Stool | 16 |

KELD COLLECTION

| | |
|-----------------------|----|
| Keld Occasional Chair | 17 |
|-----------------------|----|

HARLO COLLECTION

| | |
|----------------------------|----|
| Harlo Four Star Base Chair | 17 |
| Harlo Sled Base Chair | 17 |

ALDER COLLECTION

| | |
|--------------------|----|
| Alder Lounge Chair | 18 |
|--------------------|----|

Finishes

| |
|----|
| 19 |
|----|

Terms and Conditions

PRICES

All prices are F.O.B. point (Continental U.S.). We reserve the right to change prices without prior notice.

ORDERING

Purchase Orders should be sent to Friant & Associates, LLC at orders@friant.com, or faxed to (510) 535-6895. If your specifications were created with CAP, GIZA, or Project Matrix please send the worksheet (SP4 or SIF) with your Purchase Order.

TERMS

Net 30 days from date of invoice. Invoices are delinquent if not paid 30 days from date of invoice. In the event timely payment is not made, interest will be charged at the rate of 1.5% per month on delinquent accounts. Buyers will also be liable for normal collection costs and attorney's fee. 50% deposit is required with every order, unless prior arrangements have been made.

ORDERS

Orders are only accepted by issuance of our formal acknowledgment, and are subject to the terms set forth herein and on our order acknowledgment. It is the responsibility of the buyer to review our acknowledgment for accuracy.

LEAD TIME

Lead times are subject to availability. For current standard lead times, please visit <https://www.friant.com/shipping-and-orders/>

SHIPPING

Friant generally palletizes, boxes, and/or shrink-wraps its products. If buyer requests additional packaging or special shipping, then it is responsible for any extra costs that result. Buyer obtains title to products and assumes the risk of loss for them upon shipment from Friant's plant.

CLAIMS

We are not responsible for damage suffered in transit. Merchandise should be inspected for possible freight damage upon delivery. The consignee should file for damage or shortages with the carrier within 5 days of delivery. You are also protected for "concealed damage" if you file claim with the carrier within 5 days of delivery. Buyer must make all claims against Friant for defects, errors, or shortages in writing within 10 days after delivery. Failure to make such a claim shall constitute full acceptance.

RETURNS

No merchandise may be returned without our written consent and shipping instructions. Unauthorized returns will not be accepted and will be returned freight collect.

PARTIAL SHIPMENTS

We will make every attempt to ship orders complete and on schedule. However, we reserve the right to make partial shipments, as merchandise is ready. Invoices covering these shipments are to be paid as they become due.

ORDER CHANGE — CANCELLATIONS

Our order confirmation is final and binding. Any order change or cancellation is subject to our ability to conform. For the most up to date information, always review the order change/cancellation policy online. Allowable changes within the posted policy must be made in writing.

Terms and Conditions continued

SHIPMENT AND PREPAID FREIGHT

Unless otherwise instructed, we reserve the option to ship by what is, in our opinion, the best possible way. Upon request, we will prepay and add freight for accounts with established credit.

DELIVERY

We are not liable for delay or failure of delivery due to strikes and/or differences with workmen, war, riot, fire, compliance with government regulations, acts of nature, failure or delays of sources of supply, or any other causes beyond our control.

STORAGE

If buyer cannot accept delivery when merchandise is ready, we reserve the right to transfer goods to storage. Costs of transfer and storage will be charged to the buyer's account, and we will deem such transfer as constituting shipment for all purposes, including invoicing, as of the date the transfer is made.

CONSTRUCTION — SPECIFICATIONS

All items are produced to price list specifications unless otherwise advised. All dimensions shown are approximate. Manufacturer reserves the right to make modifications and/or improvements without prior notice.

CALIFORNIA PROP 65 WARNING

Products in this catalog can expose you to chemicals including wood dust, which is known to the State of California to cause cancer or birth defects or other reproductive harm. For more information go to <https://www.p65warnings.ca.gov/products/furniture-products>."

TSCA TITLE VI

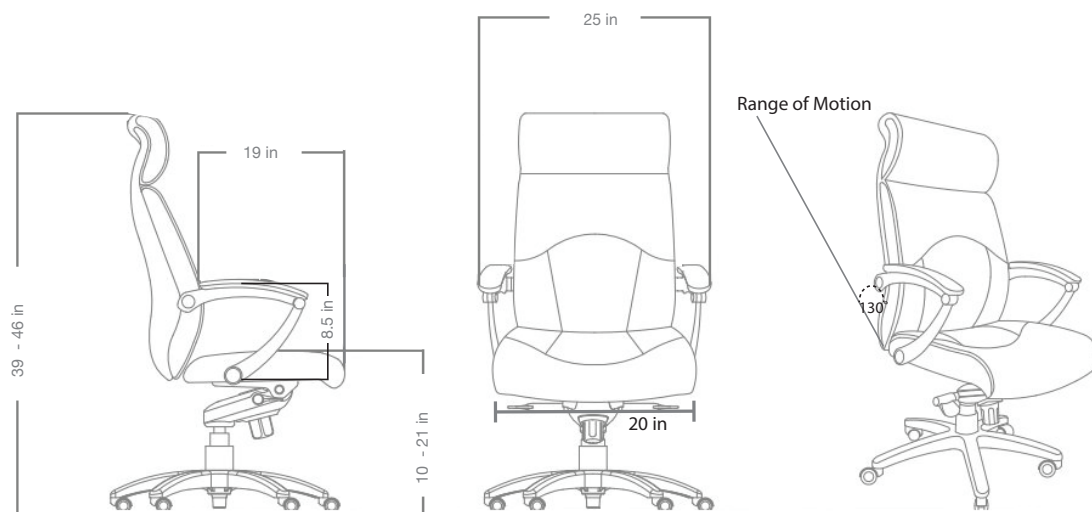
Friant products are TSCA Title VI Compliant

RIGHTS AND WARRANTIES

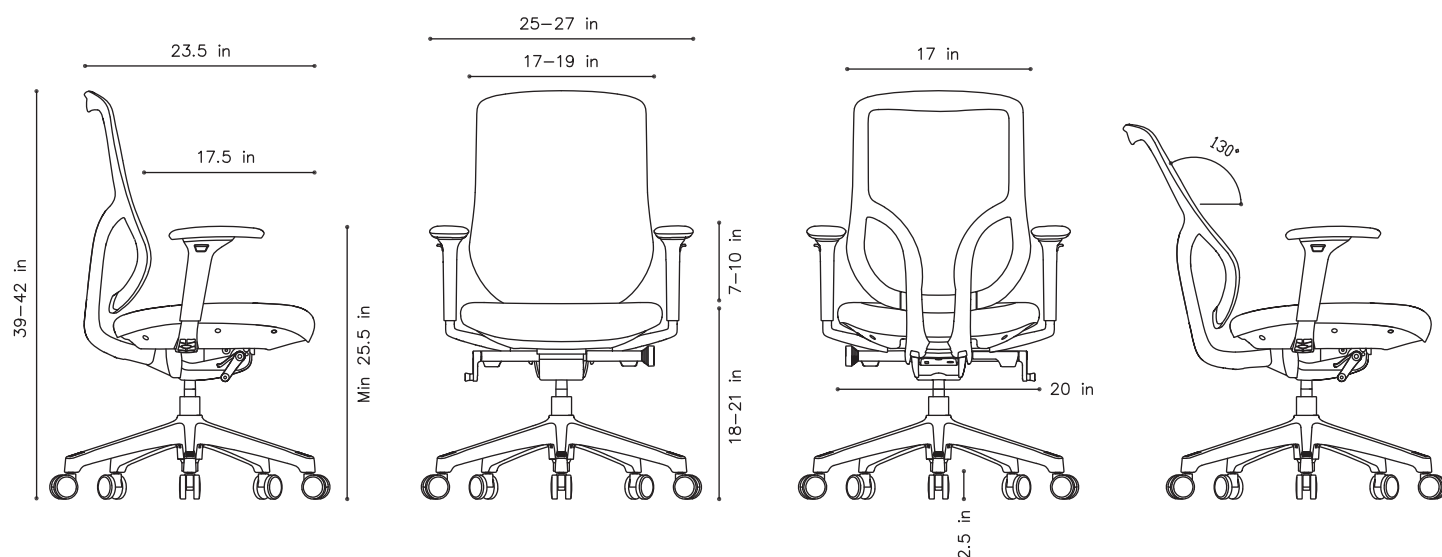
Warranty information for all Friant products can be found in the Dealer Resource Center (dealers.friant.com/warranty) or on the Friant website (www.friant.com/warranty)

Detailed Dimensions

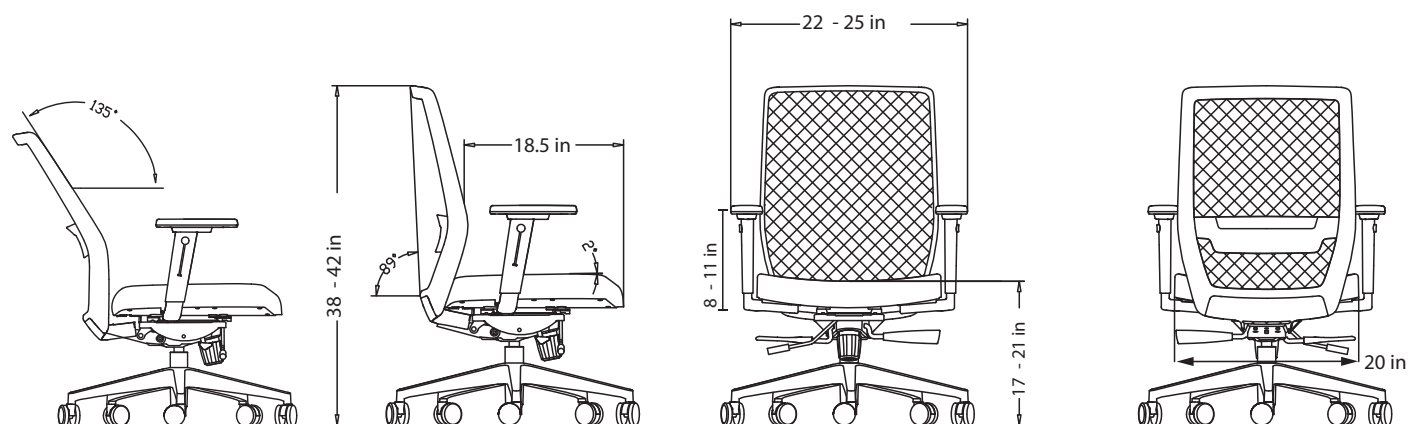
Madison



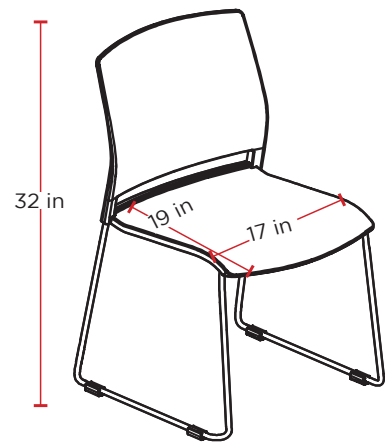
Tango



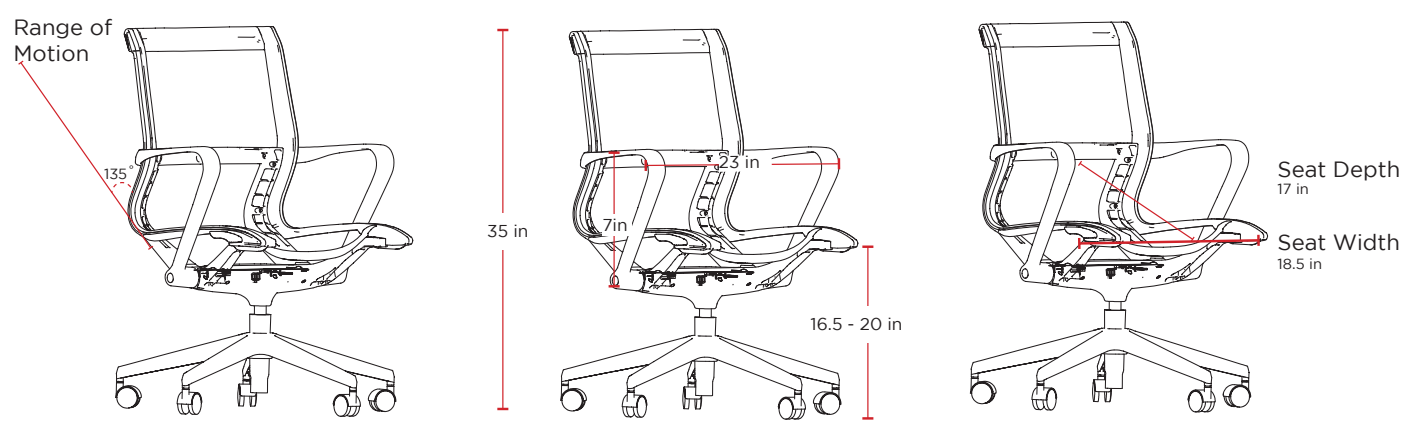
Vektor



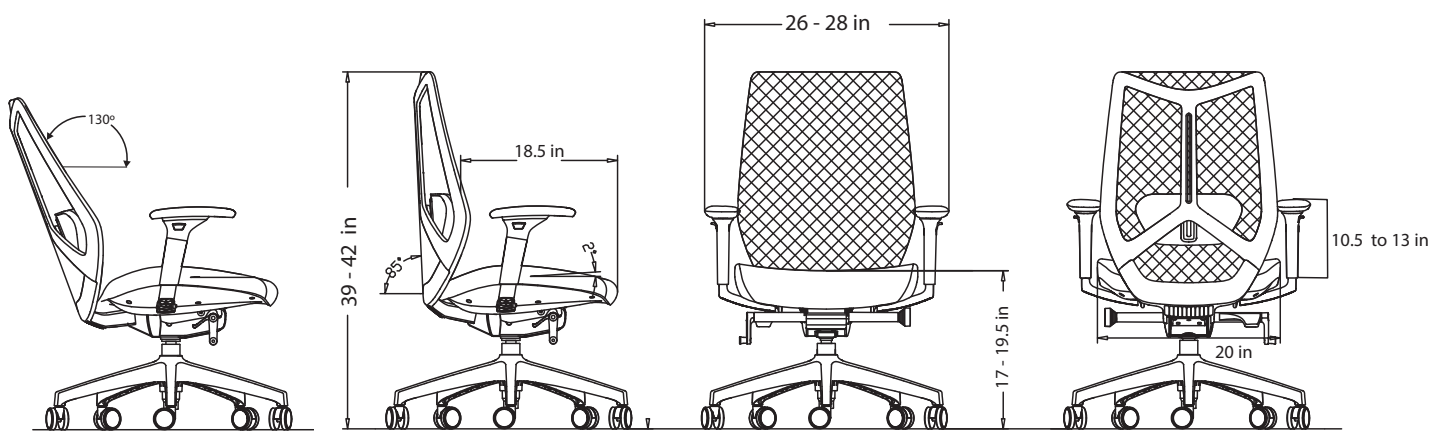
Prep



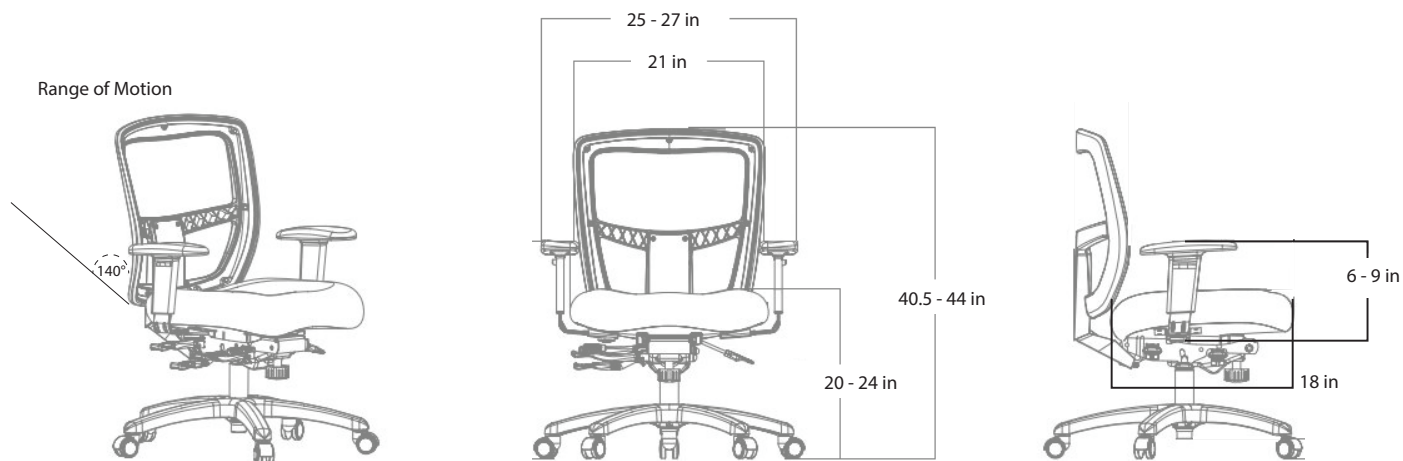
Prov



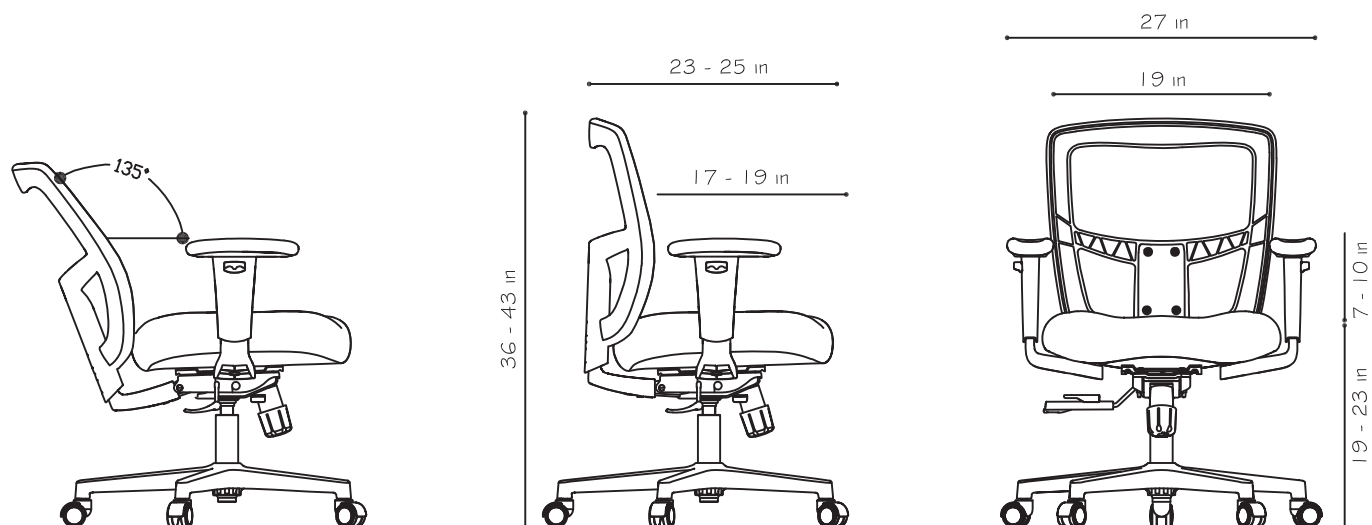
Ignite



MidZone



Zone Too



Pricing and Specifications

Task Seating

Vektor



Grey



Black



| description | model # | height | width | depth | weight | list price |
|---------------|-------------------------------|----------|-------|-------|----------|------------|
| Mid Back Task | FD00251-Grey FD00251-Black | 38"- 42" | 25" | 17" | 36.6 lbs | \$929 |

Ignite



Grey



Black



Orange



| description | model # | height | width | depth | weight | list |
|---------------|---|----------|----------|-------|----------|---------|
| Mid Back Task | FD00253-Grey FD00253-Black FD00253-Orange | 39"- 42" | 27"- 29" | 17.5" | 43.5 lbs | \$1,451 |

Tango



Grey



Black



| description | model # | height | width | depth | weight | list |
|---------------|-------------------------------|-----------|-------------|-------|----------|---------|
| Mid Back Task | FD00258-Grey FD00258-Black | 39.5"-42" | 25.5"-27.5" | 17.5" | 34.4 lbs | \$1,314 |

Zone



MidZone

| description | model # | height | width | depth | weight | list price |
|-------------------------|-------------|-----------|----------|-----------|--------|------------|
| Mid Back Task (MidZone) | BJ-MM2242BT | 40" - 44" | 25 - 27" | 19" - 22" | 56 lbs | \$1,131 |

Zone Too



Black



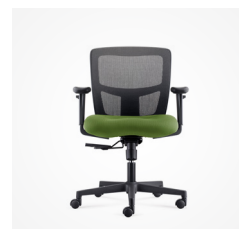
Grey



Light Blue*



Red*



Green*

| description | model # | height | width | depth | weight | list price |
|---------------|------------------|-----------|-------|-------|--------|------------|
| Mid Back Task | FD00213U-Black | 36" - 43" | 27" | 23" | 46 lbs | \$643 |
| Mid Back Task | FD00213U-Grey | 36" - 43" | 27" | 23" | 46 lbs | \$643 |
| Mid Back Task | FD00213U-LtBlue* | 36" - 43" | 27" | 23" | 46 lbs | \$643 |
| Mid Back Task | FD00213U-Red* | 36" - 43" | 27" | 23" | 46 lbs | \$643 |
| Mid Back Task | FD00213U-Green* | 36" - 43" | 27" | 23" | 46 lbs | \$643 |

*Current lead time for these finishes: <https://dealers.friant.com/standard-lead-times/>

Yele



| description | model # | height | width | depth | weight | list price |
|---------------|---------|------------|-----------|--------|--------|------------|
| Mid Back Task | FD268 | 38"-41.75" | 25.25-27" | 23.75" | 36 lbs | \$690 |

Tommen



| description | model # | height | width | depth | weight | list price |
|---------------|---------|------------|---------|-------|--------|------------|
| Mid Back Task | FD265 | 38"-41.75" | 26"-28" | 23" | 38 lbs | \$762 |

Conference/Executive Seating

Prov



Blue



Black



Grey

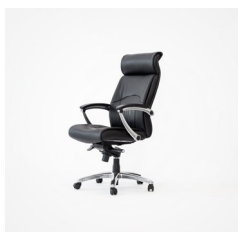


| description | model # | height | width | depth | weight | list |
|---------------------|------------|-----------|-------|-------|----------|---------|
| Mid Back Conference | F300-Blue | 35" - 38" | 23" | 23" | 35.3 lbs | \$1,571 |
| | F300-Black | | | | | |
| | F300-Grey | | | | | |

Madison



Mid Back



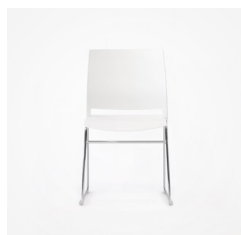
High Back



| description | model # | height | width | depth | weight | list price |
|--------------------------------|------------|--------------|--------|-------|--------|------------|
| Mid Back Executive/Conference | BJ-MBXSW-M | 39" - 41.25" | 25.25" | 25" | 55 lbs | \$1,240 |
| High Back Executive/Conference | BJ-HBXSW-M | 46" - 48.25" | 25.25" | 24.5" | 58 lbs | \$1,312 |

Stacking Seating

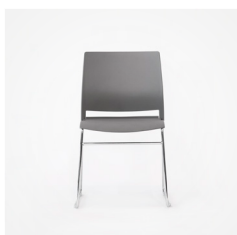
Prep



White



Blue



Grey



Prep Dolly

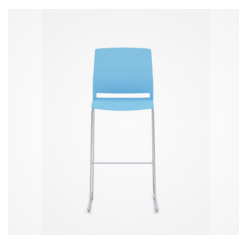
| description | model # | height | width | depth | weight | list price |
|----------------|----------------|--------|--------|--------|------------------|----------------------------|
| Stacking Chair | FCH-252C-White | 32" | 22" | 17.72" | 32.7 lbs (2 pcs) | \$657 sold in pairs |
| | FCH-252C-Blue | | | | | |
| | FCH-252C-Grey | | | | | |
| Prep Dolly | FCH-252C-TC | 38" | 19.29" | 49" | 32.4 lbs | \$523 |

Prep Dolly can stack up to 15 chairs

Prep Bar Stool



White



Blue



Grey

| description | model # | height | width | depth | weight | list price |
|----------------|--------------------|--------|-------|-------|----------------|----------------------------|
| Prep Bar Stool | FCH-252C.30-White* | 43" | 20" | 24" | 38 lbs (2 pcs) | \$818 sold in pairs |
| | FCH-252C.30-Blue* | | | | | |
| | FCH-252C.30-Grey* | | | | | |

*Current lead time for these finishes: <https://dealers.friant.com/standard-lead-times/>

Anza Collection

Anza Lounge Chair

soft seating



Smoke

Charcoal

| description | model # | height | seat height | arm to arm width | seat width | depth | weight | list price |
|-------------------|--|--------|-------------|------------------|------------|-------|----------|------------|
| Anza Lounge Chair | FD356-SMOKE ^Δ FD356-CHARCOAL | 36.5" | 15.5" | 26" | 21.5" | 29" | 70.5 lbs | \$5,117 |

^Δ This fabric color is scheduled for discontinuation when inventory is exhausted. Please contact Customer Success for current stock levels.

Hanno Collection

Hanno Sofa



Frost



Navy

| description | model # | height | seat height | arm to arm width | seat width | depth | weight | list price |
|-------------|---------------------------------|--------|-------------|------------------|------------|-------|-----------|------------|
| Hanno Sofa | FS81N-03-FROST FS81N-03-NAVY | 27" | 16" | 69.5" | 65" | 28" | 143.7 lbs | \$6,229 |

Hanno Loveseat



Frost



Navy

| description | model # | height | seat height | arm to arm width | seat width | depth | weight | list price |
|----------------|---------------------------------|--------|-------------|------------------|------------|-------|-----------|------------|
| Hanno Loveseat | FS81N-02-FROST FS81N-02-NAVY | 26" | 16" | 50" | 43" | 21" | 104.7 lbs | \$5,169 |

Hanno Chair



Frost



Navy

| description | model # | height | seat height | arm to arm width | seat width | depth | weight | list price |
|-------------|---------------------------------|--------|-------------|------------------|------------|-------|----------|------------|
| Hanno Chair | FS81N-01-FROST FS81N-01-NAVY | 27" | 16" | 30.5" | 25" | 27" | 72.8 lbs | \$3,181 |

Jest Collection

Jest Lounge Chair



Steel



Dusk



Canary

| description | model # | height | seat height | arm to arm width | seat width | depth | weight | list price |
|-------------------|----------------------|--------|-------------|------------------|------------|-------|----------|------------|
| Jest Lounge Chair | FAR-SYS-CH-01-STEEL | | | | | | | |
| | FAR-SYS-CH-01-DUSK | 32.5" | 16" | 28" | 20.5" | 28" | 30.9 lbs | \$2,849 |
| | FAR-SYS-CH-01-CANARY | | | | | | | |

Jest Guest Chair



Steel



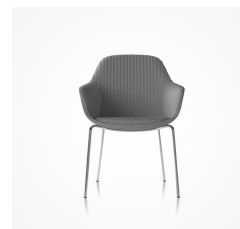
Dusk



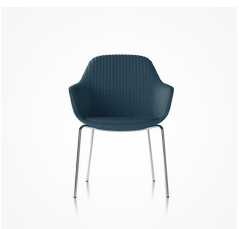
Canary

| description | model # | height | seat height | arm to arm width | seat width | depth | weight | list price |
|------------------|----------------------|--------|-------------|------------------|------------|-------|----------|------------|
| Jest Guest Chair | FAR-SYS-CH-02-STEEL | | | | | | | |
| | FAR-SYS-CH-02-DUSK | 32.5" | 18" | 24" | 17.5" | 23" | 27.6 lbs | \$2,452 |
| | FAR-SYS-CH-02-CANARY | | | | | | | |

Jest Table Chair



Steel



Dusk



Canary

| description | model # | height | seat height | arm to arm width | seat width | depth | weight | list price |
|------------------|----------------------|--------|-------------|------------------|------------|-------|------------------|------------------------------|
| Jest Table Chair | FAR-SYS-CH-04-STEEL | | | | | | | |
| | FAR-SYS-CH-04-DUSK | 32.5" | 18.25" | 24" | 17.5" | 24.5" | 55.1 lbs (2 pcs) | \$2,783 sold in pairs |
| | FAR-SYS-CH-04-CANARY | | | | | | | |

Jest Y Base Chair



Steel



Dusk



Canary

| description | model # | height | seat height | arm to arm width | seat width | depth | weight | list price |
|-------------|----------------------|--------|-------------|------------------|------------|-------|---------------------|------------------------------|
| Chrome Base | FAR-SYS-CH-06-STEEL | 32.5" | 18" | 24" | 17.5" | 23" | 55.6 lbs (2 pcs) | \$3,711 sold in pairs |
| | FAR-SYS-CH-06-DUSK | | | | | | | |
| | FAR-SYS-CH-06-CANARY | | | | | | | |

Jest Bar Stool



Steel



Dusk

| description | model # | height | seat height | arm to arm width | seat width | depth | weight | list price |
|---------------------------------|----------------------|--------|-------------|------------------|------------|-------|---------------------|------------------------------|
| Jest Bar Stool (chrome base) | FAR-SYS-CH-10-STEEL | 38.5" | 30.5" | 20" | 16" | 19.5" | 52.9 lbs (2 pcs) | \$2,519 sold in pairs |
| | FAR-SYS-CH-10-DUSK | | | | | | | |
| Jest Bar Stool (white base) | FAR-SYS-CH-10P-STEEL | 38.5" | 30.5" | 20" | 16" | 19.5" | 52.9 lbs (2 pcs) | \$2,519 sold in pairs |
| | FAR-SYS-CH-10P-DUSK | | | | | | | |

Jest Counter Stool



Steel



Dusk

| description | model # | height | seat height | arm to arm width | seat width | depth | weight | list price |
|-------------------------------------|-----------------------|--------|-------------|------------------|------------|-------|---------------------|------------------------------|
| Jest Counter Stool (chrome base) | FAR-SYS-CH-10L-STEEL | 34" | 27" | 20" | 16" | 19.5" | 51.5 lbs (2 pcs) | \$2,519 sold in pairs |
| | FAR-SYS-CH-10L-DUSK | | | | | | | |
| Jest Counter Stool (white base) | FAR-SYS-CH-10LP-STEEL | 34" | 27" | 20" | 16" | 19.5" | 51.5 lbs (2 pcs) | \$2,519 sold in pairs |
| | FAR-SYS-CH-10LP-DUSK | | | | | | | |

Keld Collection

Keld Occasional Chair



Color shown:
PF2301-1 Whiskey

For the Keld chair, select from the Cobblestone fabrics (see page 19) or Napoli material (see page 19)

Cobblestone:

- PF2201-1 Linen*
- PF2201-2 Indigo
- PF2201-3 Forest*
- PF2201-4 Flint*

Napoli:

- PF2301-1 Whiskey
- PF2301-2 Nightcap

*Current lead time for these finishes: <https://dealers.friant.com/standard-lead-times/>

| description | model # | height | seat height | arm to arm width | seat width | depth | weight | list price |
|-----------------------|---------|--------|-------------|------------------|------------|-------|--------|------------|
| Keld Occasional Chair | FL7105 | 28.5" | 17.5" | 25" | 22" | 22.5" | 29 lbs | \$1,229 |

Harlo Collection

Harlo Four Star Base



Color shown:
PF2201-3 Forest

For the Harlo chair, select from the Cobblestone fabrics (see page 19)

- PF2201-1 Linen
- PF2201-2 Indigo*
- PF2201-3 Forest*
- PF2201-4 Flint

*Current lead time for these finishes: <https://dealers.friant.com/standard-lead-times/>

| description | model # | height | seat height | arm to arm width | seat width | depth | weight | list price |
|----------------------------|----------|--------|-------------|------------------|------------|-------|--------|------------|
| Harlo Four Star Base Chair | FL7102-1 | 30" | 17" | 30" | 22" | 30" | 42 lbs | \$2,048 |

Harlo Sled Base



Color shown:
PF2201-3 Forest

For the Harlo chair, select from the Cobblestone fabrics (see page 19)

- PF2201-1 Linen
- PF2201-2 Indigo*
- PF2201-3 Forest*
- PF2201-4 Flint

*Current lead time for these finishes: <https://dealers.friant.com/standard-lead-times/>

| description | model # | height | seat height | arm to arm width | seat width | depth | weight | list price |
|-----------------------|----------|--------|-------------|------------------|------------|-------|--------|------------|
| Harlo Sled Base Chair | FL7102-2 | 30" | 17" | 30" | 22" | 30" | 39 lbs | \$2,000 |

Alder Collection

Alder Lounge Chair



Color shown:
PF1301-2 Cadet

For the Alder chair, select from the Sunday fabrics (see page 19)

- PF1301-2 Cadet*
- PF1301-9 Dune
- PF1301-10 Pistachio*
- PF1301-11 Wine*
- PF1301-12 Rust*
- PF1301-13 Sunflower*
- PF1301-14 Yam*
- PF1301-15 Mist

*Current lead time for these finishes: <https://dealers.friant.com/standard-lead-times/>

| description | model # | height | seat height | arm to arm width | seat width | depth | weight | list price |
|--------------------|---------|--------|-------------|------------------|------------|-------|--------|------------|
| Alder Lounge Chair | F711 | 34" | 15" | 30" | 21" | 33" | 46 lbs | \$2,476 |

Cobblestone Fabrics

Cobblestone fabrics shown below can be used on the following soft seating collections:

- Keld Collection
- Harlo Collection



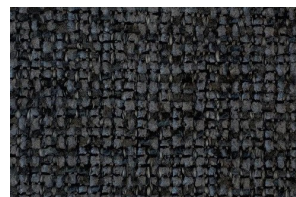
PF2201-1
Linen



PF2201-2
Indigo



PF2201-3
Forest

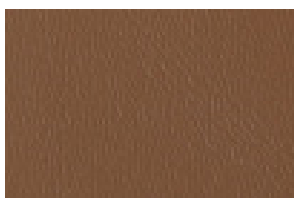


PF2201-4
Flint

Napoli Material

Napoli material shown below can be used on the following soft seating collections:

- Keld Collection



PF2301-1
Whiskey



PF2301-2
Nightcap

Sunday Fabrics

For the following soft seating collections, select from the Sunday fabrics shown below:

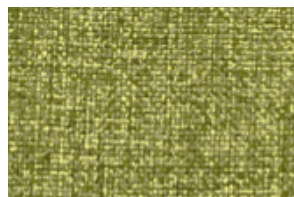
- Alder Collection



PF1301-2
Cadet



PF1301-9
Dune



PF1301-10
Pistachio



PF1301-11
Wine



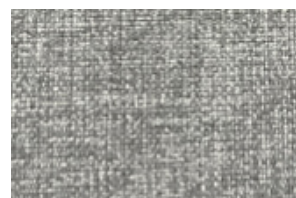
PF1301-12
Rust



PF1301-13
Sunflower



PF1301-14
Yam



PF1301-15
Mist



friant.com | [@friantworkspace](https://www.instagram.com/friantworkspace)